

~~SECRET~~
C-105 With J-65 Report # 7-0400-05
Production Engines ISSUE 18

WEIGHT SUMMARY & C. G. POSITION

Mr. O. Michaelson

Sept. 1/55



National Research Council Conseil national de recherches
 Canada Canada
 C.I.S.T.I. I.C.I.S.T.
 Aeronautical and Bibliothèque
 Mechanical d'aéronautique
 Engineering Library et de génie mécanique

TP

JAN 07 1993

Report no.: QCX - AVRO - CF105 - R-7-0400-05-Iss-18

has been downgraded to: _____
 de-classified

by (Name): Michel W. Drapeau

(Dept.): A/DND Coordinator, Access to Information

Date: Dec. 7, 1992

R. Anger
 Signature

Classification cancelled / changed to: UNCLASSIFIED

By authority of: DRDA 7/DARFT 5-8/DAS Eng 6-4-5

Date: 5 Nov 1992

Signature: B. Aubrey

Unit / Rank / Appointment: DSIS 3, Secretary CRAD HQ DRP

~~SECRET~~
UNCLASSIFIED
NON CLASSIFIE

Date: 1st, Sept., 1955
Aircraft: C-105 With J75 Engines
as Interim Power Plant

Report # 7-0400-05
Sheet # 001-1 Issue 18
Prepared By K. Griffin
Checked By: E. Burnett

INTRODUCTION

This summary is a revised Weight and C.G. estimate of the C-105 Aircraft, based on the latest design information in being on Aug. 31st, 1955. All Weight and C.G. changes are relative to Issue 17.

GENERAL:

- (a) As in Issue 17, Pratt and Whitney J75 Engines comprise the Interim Power Plant (6,175 lb. each)
- (b) The weight of Radio and Radar carried in this issue is 2,908 lb. The system is described as "Integrated Electronic System for C-105 Aircraft with certain deviations". The breakdown into items is given in Weight Summary Issue 14.
- (c) As in Issues 15, 16, and 17 the extended leading edge is recorded in this issue.

1. STRUCTURE

WEIGHT (lb)

| | | |
|---|-------------------|-----|
| (a) <u>Wing:</u> | | |
| I/W Joints - Elevator Jack fittings changed to Steel from Al. | + | 32 |
| I/W Structure M/S to R/S - Skin thickness reduced | - | 50 |
| Ribs - redesigned | - | 18 |
| Stringer posts - redesigned | - | 71 |
| Weight Change Decrease | - | 107 |
| | <u>Ref. 002-1</u> | |
| (b) <u>Fin and Rudder:</u> | | |
| No Weight Change | | 0 |
| (c) <u>Fuselage to Sta. 255":</u> | | |
| Intake Ramp - L/Edge Tip and Support - Mg. were Al. | - | 17 |
| Miscellaneous other changes | - | 2 |
| Navigator's Canopy - redesign of window; skinning now Al. was Mg., etc. | + | 6 |
| Weight Change Decrease | - | 13 |
| | <u>Ref. 002-1</u> | |
| (d) <u>Fuselage Sta. 255" to 485":</u> | | |
| Miscellaneous Structural Changes | + | 4 |
| Weight Change Increase | + | 4 |
| (e) <u>Fuselage Sta. 485" Aft.</u> | | |
| Rear Fuselage - completed redesign | | 0 |

Ref. 002-1

TOTAL STRUCTURE WEIGHT DECREASE

- 116



45236

UNCLASSIFIED
NON CLASSIFIED

Date: 1st. Sept., 1955
Aircraft: C-105 With J75 Engines
as Interim Power Plant

Report # 7-0400-05
Sheet # 001-2 Issue 18
Prepared By: K. Griffin
Checked By: E. Burnett

INTRODUCTION

| | <u>WEIGHT (lb)</u> |
|--|--------------------|
| 2. <u>LANDING GEAR</u> | |
| (a) Main Undercarriage - Increase in Weight of Dowty parts Ref. 002-2 | + 70 |
| <u>TOTAL LANDING GEAR INCREASE</u> | <u>+ 70</u> |
| 3. <u>POWER PLANT & SERVICES</u> | |
| No Weight Change | 0 |
| 4. <u>FLYING CONTROLS</u> | |
| No Weight Change | 0 |
| 5. <u>EQUIPMENT</u> | |
| No Weight Change | 0 |

SUMMARY

Weight Change - Aircraft Weight Empty
Structure - 116 lb.
Landing Gear + 70 lb.
- 46 lb.

Weight Change - Operational Load Less Fuel

Nil.

Weight Change - Operational Weight Empty - (Aircraft Less Fuel).

| | | | |
|-----------------|-----------------|---|-----------------|
| <u>Issue 17</u> | <u>Issue 18</u> | = | <u>- 46 lb.</u> |
| 43,731 | 43,685 | | |

UNCLASSIFIED
NON CLASSIFIED

~~SECRET~~

Date: 1st, Sept. 1955
Aircraft: C-105 With J75 Engines
as Interim Power Plant

Report # 7-0400-05
Sheet # 002-2 Issue 18
Prepared By: K. Griffin
Checked By: E. Burnett

WEIGHT CHANGES TO 7-0400-05 Issue 17

WEIGHT CHANGES

No estimate has been made for the deletion of the Gill Inflation Bag.

Undercarriage

| | |
|----------------|---|
| + 0.02 | Main U/C Doors - C.G. Changes to linkage |
| + 70.00 | Main U/C - inc. in Dowty parts from 590 to 625 lb/assy. |
| + 70.02 | |
| <u>- 45.50</u> | <u>TOTAL WEIGHT CHANGE</u> |

SECRET

UNCLASSIFIED
 Date: 1st, Sept. 1955
 Aircraft: C-119 With J75 Engines
 as Interim Power Plant

Report # 7-0400-05
 Sheet # 003-1 Issue 18
 Prepared By: J. Murphy
 Checked By: E. Burnett

WEIGHT AND C. G. SUMMARY

| Ref. No. | Description | WEIGHT lb. | H. ARM ins. | V. ARM ins. |
|----------|---|----------------------------------|----------------------------|----------------------------|
| | STRUCTURE | 16,792.19 | 566.33 | 138.88 |
| 1000000 | Wing | 9,529.38 | 642.15 | 142.58 |
| 2000000 | Fin and Rudder | 911.57 | 756.76 | 211.28 |
| 3000000 | Fuselage Structure Fwd. 255" 255" to 485" Aft. 485" | 2,142.09 1,501.32 2,707.83 | 184.05 371.63 645.75 | 129.83 132.24 112.30 |
| 4000000 | UNDERCARRIAGE - Up Position | 2,843.97 | 485.08 | 134.10 |
| 4010100 | Main Undercarriage | 1,847.60 | 539.88 | 141.00 |
| 4010200 | Main U/C Doors & Fairings | 287.32 | 539.21 | 136.40 |
| 4010300 | Main U/C Hydraulics | 279.84 | 535.01 | 137.75 |
| 4020100 | Nose Wheel Undercarriage | 284.34 | 165.18 | 100.04 |
| 4020200 | Nose U/C Doors & Fairings | 25.92 | 163.71 | 89.22 |
| 4020300 | Nose U/C Hydraulics | 118.95 | 220.34 | 103.95 |
| 5000000 | POWER PLANT & SERVICES (10,620.78) | 13,970.78 | 653.53 | 119.06 |
| 5010000 | Engines J75 (9,297.00) | 12,647.00 | 662.35 | 117.82 |
| 5020000 | Gear Box & Drive | 150.00 | 606.00 | 94.66 |
| 5030000 | Engine Controls | 25.10 | 356.68 | 119.39 |
| 5040000 | Pneumatic Starting System | 70.00 | 610.00 | 94.75 |
| 5050000 | Engine De-Icing | 65.75 | 564.53 | 114.37 |
| 5060000 | Fire Extinguishing System | 90.00 | 610.65 | 129.00 |
| 5070000 | Engine Mountings & Brackets | 221.11 | 645.29 | 132.67 |
| 5080000 | Fuel System | 701.82 | 536.24 | 143.92 |
| 6000000 | FLYING CONTROLS GROUP | 1,738.26 | 652.07 | 140.52 |
| 6010000 | Mechanical Flying Controls | 773.43 | 679.76 | 145.88 |
| 6030000 | Flying Controls Electronics | 108.00 | 222.33 | 131.43 |
| 6000000 | Flying Controls Hydraulics | 856.83 | 681.24 | 136.83 |
| | EQUIPMENT FIXED & REMOVABLE | 6,526.75 | 303.70 | 114.72 |
| 7010000 | Instruments | 57.30 | 146.41 | 137.04 |
| 7010003 | Probe | 15.00 | -18.00 | 108.00 |
| 7030000 | Oxygen System | 46.12 | 220.36 | 138.15 |
| 7040000 | Air Conditioning System | 624.95 | 326.22 | 134.63 |
| 7050000 | Hydraulic Main System | 215.66 | 591.04 | 117.41 |
| 7060000 | Armament Provisions | 31.34 | 327.65 | 104.45 |
| 7080000 | Brake Parachute | 68.03 | 794.01 | 126.23 |
| 7090000 | Electrical System | 779.19 | 402.81 | 121.36 |
| 7100000 | Low Pressure Pneumatics | 16.60 | 217.17 | 133.41 |
| 7110000 | Oil & Hydraulic Fluid Cooling | 119.80 | 567.91 | 104.22 |
| 7120000 | Intake De-Icing | 50.60 | 204.55 | 113.76 |
| 7000000 | Radio & Radar Fixed, Power Supplies | 921.10 | 220.05 | 111.00 |
| 7160000 | Canopy Actuation | 47.00 | 223.43 | 156.83 |
| 7170000 | Cabin Consoles | 20.85 | 177.01 | 125.38 |
| 7180000 | Radar Door Actuation | 10.00 | 268.00 | 95.00 |
| 7190000 | Radome Anti-icing | 16.80 | 66.35 | 124.40 |
| 7200000 | Cabin Insulation | 11.91 | 179.24 | 130.00 |
| 7210000 | Cockpit Pressure Sealing | 20.00 | 186.01 | 130.00 |

SECRET

UNCLASSIFIED
NON-CLASSIFIED

Date: 1st. Sept. 1955
Aircraft: C-105 With J75 Engines
as Interim Power Plant

Report # 7-0400-05
Sheet # 003-2 Issue 18
Prepared By: J. Murphy
Checked By: E. Burnett

WEIGHT & C.G. SUMMARY

| Ref. No. | Description | WEIGHT lb. | H. ARM ins. | V. ARM ins. | C.G. POSITION % M.A.C. |
|----------|---|---------------------|------------------|-----------------|------------------------|
| | <u>EQUIPMENT (Fixed & Remov. (Cont'd.))</u> | | | | |
| 8010100 | Ejector Seats | 204.00 | 200.10 | 136.25 | |
| 8010200 | Emergency Provision | 16.95 | 166.01 | 130.65 | |
| 8020000 | Radar Removable | 1,259.70 | 141.75 | 114.53 | |
| 8000000 | Radio Removable & I.F.F. | 276.20 | 284.51 | 123.98 | |
| 8050100 | Missile Pack Structure | 676.17 | 385.26 | 95.61 | |
| 8050200 | Missile Pack Mechanisms | 410.48 | 373.88 | 102.86 | |
| 8050300 | Missile Pack Hydraulics | 293.00 | 336.29 | 101.00 | |
| 8050400 | Missile Pack Electronics | 318.00 | 389.15 | 101.22 | |
| | AIRCRAFT WEIGHT EMPTY | 41,871.95 | 552.53 | 128.24 | |
| 9000000 | USEFUL LOAD | 17,692.67 | 522.11 | 140.37 | |
| 9010000 | Crew | 430.00 | 194.00 | 136.50 | |
| 9020000 | Oil | 85.08 | 611.71 | 135.00 | |
| 9050000 | Alcohol for Radome De-Icing | 22.00 | 93.00 | 138.00 | |
| 9070000 | Residual Fuel | 219.80 | 536.70 | 135.07 | |
| 9090000 | Fuel for Combat Mission | 15,880.00 | 539.20 | 143.50 | |
| 9030000 | Missiles (Armament) | 1,042.40 | 399.12 | 95.60 | |
| 9040000 | Oxygen Charge | 13.39 | 259.69 | 159.91 | |
| | Normal Combat Mission U/C Up. | 59,564.62 | 543.49 | 131.85 | 29.69 |
| | U/C Down | | 545.06 | 129.69 | 30.13 |
| | Half Combat Mission Fuel 1011 @ 7.85 lb/gal. | 7,940.00 | 540.85 | 139.60 | |
| | U/C Up | | 544.40 | 129.45 | 29.94 |
| | Combat Weight (Half Combat Mission Fuel) U/C Down | 51,624.62 | 546.21 | 126.97 | 30.44 |
| | U/C Up | | 545.05 | 127.61 | 30.12 |
| | Operational Weight Empty U/C Down | 43,684.62 | 547.19 | 124.67 | 30.71 |
| | U/C Up | | 548.62 | 128.39 | 31.11 |
| | Operational Weight Empty (Less Missiles) U/C Down | 42,642.22 | 550.81 | 125.38 | 31.71 |
| | Maximum Internal Fuel 2,544 gal. @ 7.85 lb/gal. Water (Air-Conditioning System) | 19,970.00 125.00 | 538.88 268.00 | 144.33 95.00 | |
| | U/C Up | | 542.58 | 132.78 | 29.44 |
| | A.U.W. Max. Internal Fuel U/C Down | 63,779.62 | 544.04 | 130.77 | 29.84 |
| | Max. External Fuel, 500 gal. @ 7.85 lb/gal. & Drop Tank | 4,235.00 | 528.90 | 62.00 | |
| | U/C Up | | 541.73 | 128.37 | 29.21 |
| | A.U.W. Max. Internal & External Fuel U/C Down | 68,014.62 | 543.10 | 126.49 | 29.59 |

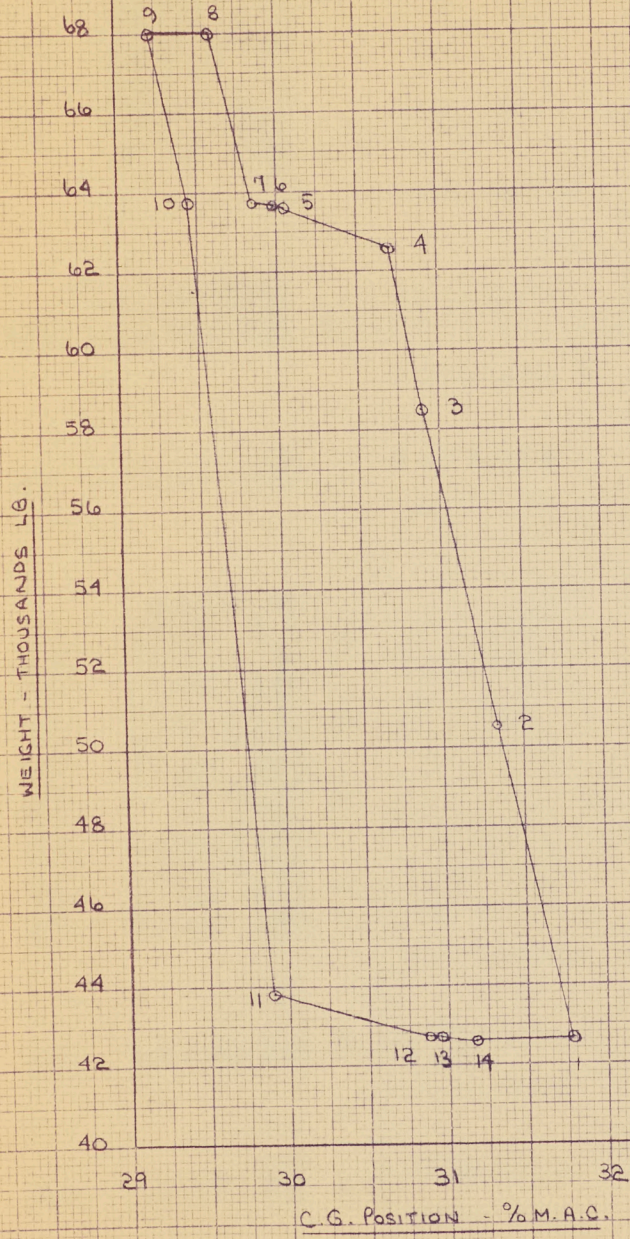
**UNCLASSIFIED
NON CLASSIFIED**

REPORT NO: 7-0400-05 ISSUE 18

BY: Kathleen Griffin

DATE: Aug 29th 1955

C-105 A/C C.G. ENVELOPE
FOR A/C FLIGHT CONDITIONS
WITH J75 ENGINES (A25)



| No. | COMBAT MISSION FUEL | NORMAL MISSION FUEL | MAX INTERNAL FUEL | EXT. FUEL & TANKS | MISSILES | DEICING FLUID | WATER | 1/2 UP | 1/2 DOWN |
|-----|---------------------|---------------------|-------------------|-------------------|----------|---------------|-------|--------|----------|
| 1 | | | | | | | | | * |
| 2 | * | | | | | | | | * |
| 3 | | * | | | | | | | * |
| 4 | | | * | | | | | | * |
| 5 | | | * | | * | | | | * |
| 6 | | | * | | * | * | | | * |
| 7 | | | * | | * | * | * | | * |
| 8 | | | * | * | * | * | * | * | * |
| 9 | | | * | * | * | * | * | * | * |
| 10 | | | * | | * | * | * | * | * |
| 11 | | | | | * | * | * | * | * |
| 12 | | | | | | * | * | * | * |
| 13 | | | | | | | * | * | * |
| 14 | | | | | | | | | * |

N.B. IN ORDER TO BRING POINT ① TO THE AFT LIMIT OF 31%MAC 280 LB BALLAST MUST BE ADDED AT STA 120INS.

359-12 KUFFEL & ESSER CO.
10 - 19th St. New York, N.Y. 10011
MADE IN U.S.A.

A. V. ROE CANADA LTD.
MALTON, ONT.

WEIGHTS C. OF G. TABULATION
(AIRFRAME)

PROJECT **C-105**

PREPARED BY

A.U.W.

LBS.

COMPONENT

| DESCRIPTION | | REFERENCE NO. | COMP. NO. | WEIGHT | H |
|------------------|----------------------------|---------------|-----------|--------|----|
| TOTAL WING GROUP | | 1000000 | | | |
| OUTER WING | | 1010000 | | | |
| 14 | SKIN O W | 1010001 | 64 | 79800 | 68 |
| 14 | STRINGERS AND POSTS O W | 1010002 | 64 | 12520 | 69 |
| 14 | SPARS O W | 1010003 | 64 | 36736 | 70 |
| 14 | RIBS O W | 1010004 | 64 | 13334 | 69 |
| 14 | AILERON CONTROL BOX O W | 1010006 | 64 | 49653 | 76 |
| 3 | WING JOINTS O W | 1010007 | 64 | 11650 | 64 |
| | | | | 203693 | |
| AILERON | | 1020000 | | | |
| 17 | AILERON STRUCTURE | 1020001 | 74 | 33384 | 79 |
| 17 | AILERON MARRY UP ITEMS | 1020002 | | 88678 | |
| | | | | 34270 | |
| 20 | ELEVATOR STRUCTURE | 1030000 | 82 | 43567 | 75 |
| | | | | 43567 | |
| INNER WING | | 1040000 | | | |
| 12 | MAIN U C STRUCTURE | 1040001 | 62 | 23458 | 57 |
| 12 | FRONT SPAR I W | 1040002 | 62 | 18000 | 45 |
| 12 | MAIN SPAR I W | 1040003 | 62 | 15800 | 56 |
| 12 | FWD CENTRE SPAR I W | 1040004 | 62 | 56266 | 60 |
| 12 | AFT CENTRE SPAR I W | 1040005 | 62 | 40146 | 65 |
| 12 | REAR SPAR I W | 1040006 | 62 | 10000 | 70 |
| 12 | I W STRUCTURE F S TO M S | 1040007 | 62 | 89170 | 49 |
| 12 | I W STRUCTURE M S TO R S | 1040008 | 62 | 27743 | 62 |
| 12 | STRUCTURE AFT OF REAR SPAR | 1040009 | 62 | 27920 | 71 |
| 12 | ELEVATOR CONTROL BOX I W | 1040010 | 62 | 41853 | 72 |
| 16 | WING FAIRINGS | 1040011 | | 9270 | 62 |
| 12 | WING JOINTS I W | 1040012 | 62 | 99628 | 65 |
| | | | | 622178 | |
| 12 | LEADING EDGE I W | 1050000 | 63 | 29230 | 45 |
| | | | | 29230 | |
| 14 | LEADING EDGE O W | 1060000 | 65 | 20000 | 65 |
| | | | | 20000 | |

WEIGHTS C. OF G. TABULATION

(AIRFRAME)

REPORT NO. 7-0400-05 Issue 18

Sheet # 004-1

A.U.W.

Lbs.

COMPONENT

DATE Sept. 1/55

PAGE

| REFERENCE NO. | COMP. NO. | WEIGHT | H. ARM | V. ARM | H. MOMENT | V. MOMENT |
|---------------|-----------|--------|--------|--------|-----------|-----------|
| 1000000 | | | | | | |
| 1010000 | | | | | | |
| 1010001 | 64 | 79800 | 68900 | 13600 | 54902200 | 10652800 |
| 1010002 | 64 | 12520 | 69820 | 13700 | 8741464 | 1715240 |
| 1010003 | 64 | 36736 | 70360 | 13601 | 25847450 | 4996463 |
| 1010004 | 64 | 13334 | 69340 | 13740 | 9245796 | 1832092 |
| 1010006 | 64 | 49653 | 76962 | 13535 | 38213942 | 6720534 |
| 1010007 | 64 | 11650 | 64460 | 13840 | 7509590 | 1612360 |
| | | 203693 | | | 144540442 | 27729489 |
| 1020000 | | | | | | |
| 1020001 | 74 | 33384 | 79190 | 13556 | 26436790 | 4525535 |
| 1020002 | | 886 | 78207 | 13079 | 692914 | 115880 |
| | | 34270 | | | 27129704 | 4641415 |
| 1030000 | 82 | 43567 | 75550 | 14260 | 32914869 | 6212654 |
| | | 43567 | | | 32914869 | 6212654 |
| 1040000 | | | | | | |
| 1040001 | 62 | 23458 | 57683 | 14216 | 13531278 | 3334789 |
| 1040002 | 62 | 18000 | 45000 | 14400 | 8100000 | 2592000 |
| 1040003 | 62 | 15800 | 56570 | 14280 | 8938060 | 2256240 |
| 1040004 | 62 | 5626 | 60000 | 14600 | 3375600 | 821396 |
| 1040005 | 62 | 4014 | 65400 | 14600 | 2625156 | 586044 |
| 1040006 | 62 | 10000 | 70200 | 14500 | 7020000 | 1450000 |
| 1040007 | 62 | 89170 | 49297 | 14470 | 43958135 | 12902899 |
| 1040008 | 62 | 2774 | 39621 | 1541 | 172439436 | 40295240 |
| 1040009 | 62 | 27920 | 71880 | 15000 | 20068896 | 4188000 |
| 1040010 | 62 | 4185 | 3725 | 761 | 30375233 | 5991675 |
| 1040011 | | 9270 | 62080 | 14920 | 5754816 | 1383084 |
| 1040012 | 62 | 9962 | 8650 | 191 | 64777129 | 14533733 |
| | | 622178 | | | 380963739 | 90335100 |
| 1050000 | 63 | 29230 | 45577 | 14500 | 13322157 | 4238350 |
| | | 29230 | | | 13322157 | 4238350 |
| 1060000 | 65 | 20000 | 65310 | 13550 | 13062000 | 2710000 |
| | | 20000 | | | 13062000 | 2710000 |

W

W

S

M S
R S
SPAR
I W

A. V. ROE CANADA LTD.
MALTON, ONT.

WEIGHTS C. OF G. TABULATION
(AIRFRAME)

PROJECT C-105 PREPARED BY _____ A.U.W. _____ LBS. COMPONENT _____

| DESCRIPTION | | REFERENCE NO. | COMP. NO. | WEIGHT | H. |
|-------------|----------------------------|---------------|-----------|---------|----|
| 24 | FIN | 201000083 | | 7962074 | |
| | | | | 79620 | |
| 25 | RUDDER | 202000084 | | 1153781 | |
| | | | | 11537 | |
| | RUDDER NOSE ACCESS DOOR | | | | |
| | RUDDER STRUCTURE FOR 24 | | | | |
| | SKIN F F | | | | |
| | SKIN C F | | | | |
| | SKIN B F | | | | |
| | SKIN E B | | | | |
| | STRINGERS F F | | | | |
| | STRINGERS B F | | | | |
| | STRINGERS E F | | | | |
| | FORWERS F F | | | | |
| | FORWERS C F | | | | |
| | FORWERS B F | | | | |
| | INTERMEDIATE FORWERS C | | | | |
| | HEAVY FORWERS C F | | | | |
| | LONGERONS F F | | | | |
| | LONGERONS E F | | | | |
| | LONGERONS B F | | | | |
| | TOP LONGERONS E F | | | | |
| | TOP BING LONGERONS B F | | | | |
| | LONGERONS FOR 455 F F | | | | |
| | LONGERONS FOR 400 C F | | | | |
| | DUCT BAY LONGERONS C F | | | | |
| | DUCT BAY LONGERONS B F | | | | |
| | STR BELOW BAYTON LONGERONS | | | | |
| | LONGITUDINAL RAILS B F | | | | |
| | RADAR ACCESS DOOR | | | | |
| | MAIN FRAM AT STR ASMT | | | | |
| | DIFF BRAKE ACCEN STRUCTURE | | | | |
| | COCKPIT DECKING | | | | |
| | DUCT C F | | | | |
| | DUCT B F | | | | |
| | CANOPY ARCH F F | | | | |
| | CANOPY ARCH C F | | | | |
| | ROCKWELL PANEL STIFFENERS | | | | |
| | ROCK W C SUPPORT STRUCTURE | | | | |
| | CREW BULKHEAD | | | | |
| | EQUIP BAY STRUCTURE | | | | |
| | WINDSCREEN B F | | | | |
| | WINDSCREEN F F | | | | |
| | REAR TAIL CASE | | | | |
| | FOLDING UNDER BRIGGS B F | | | | |
| | INTERNAL FOLDING AIR DUCT | | | | |
| | LIGHT HEAVY COVER B F | | | | |
| | ENGINE ACCESS DOOR C F | | | | |
| | SEAL IN WINDSHIELD BAY | | | | |
| | JOINT STRAPS AND DISC | | | | |
| | FLOOR C F | | | | |

UNCLASSIFIED
NON CLASSIFIE

WEIGHTS C. OF G. TABULATION

(AIRFRAME)

REPORT NO. 7-0400-05 Issue 18

Sheet # 004-2

A.U.W. _____ LBS. COMPONENT _____

DATE Sept. 1/55 PAGE _____

| REFERENCE NO. | COMP. NO. | WEIGHT | H. ARM | V. ARM | H. MOMENT | V. MOMENT |
|---------------|-----------|--------|--------|--------|-----------|-----------|
| 201000083 | | 79620 | 74851 | 21077 | 59596366 | 16781507 |
| | | 79620 | | | 59596366 | 16781507 |
| 202000084 | | 11537 | 81368 | 21481 | 9387426 | 2478263 |
| | | 11537 | | | 9387426 | 2478263 |

A. V. ROE CANADA LTD.
MALTON, ONT.

WEIGHTS C. OF G. TABULATIO
(AIRFRAME)

PROJECT C-105 PREPARED BY _____ A.U.W. _____ LBS. COMPONENT _____

| DESCRIPTION | | REFERENCE NO. | COMP. NO. | WEIGHT | H. |
|----------------------|----------------------------|---------------|-----------|--------|----|
| TOTAL FUSELAGE GROUP | | 3000000 | | | |
| | FUSELAGE BASIC STRUCTURE | 3010000 | | | |
| 3 | RADOME | 30100001 | 51 | 120 00 | 4 |
| 3 | RADAR NOSE ACCESS DOORS | 30100002 | 51 | 55 38 | 9 |
| 3 | NOSE STRUCTURE FWD 120 | 30100003 | 51 | 91 67 | 9 |
| 3 | SKIN F F | 30100004 | 52 | 67 41 | 19 |
| 4 | SKIN C F | 30100005 | 54 | 130 59 | 37 |
| 5 | SKIN D B | 30100006 | 56 | 83 79 | 53 |
| 5 | SKIN E B | 30100007 | 58 | 125 48 | 67 |
| 3 | STRINGERS S F F | 30100008 | 52 | 12 80 | 18 |
| 4 | STRINGERS C F | 30100009 | 54 | 51 73 | 36 |
| 5 | STRINGERS D B | 30100010 | 56 | 5 00 | 50 |
| 3 | FORMERS F F | 30100011 | 52 | 77 17 | 18 |
| 4 | FORMERS C F | 30100012 | 54 | 270 10 | 37 |
| 5 | FORMERS D B | 30100013 | 56 | 97 32 | 53 |
| 5 | INTERMEDIATE FORMERS E B | 30100014 | 58 | 168 04 | 66 |
| 5 | HEAVY FORMERS E B | 30100015 | 58 | 169 99 | 66 |
| 3 | LONGERONS F F | 30100016 | 52 | 53 11 | 18 |
| 5 | LONGERONS D B | 30100017 | 56 | 3 26 | 58 |
| 5 | LONGERONS E B | 30100018 | 58 | 56 96 | 65 |
| 5 | TOP LONGERONS E B | 30100019 | 58 | 43 52 | 66 |
| 5 | TOP WING LONGERONS D B | 30100021 | 56 | 18 90 | 53 |
| 3 | LONGERONS 255 485 F F | 30100022 | 52 | 53 25 | 5 |
| 3 | LONGERONS 255 485 C F | 30100023 | 54 | 161 48 | 39 |
| 4 | DUCT BAY LONGERONS C F | 30100024 | 54 | 4 51 | 47 |
| 5 | DUCT BAY LONGERONS D B | 30100025 | 56 | 110 12 | 52 |
| 4 | STR BELOW BOTTOM LONGERON | 30100026 | 54 | 39 61 | 27 |
| 5 | LONGITUDINAL BEAMS D B | 30100027 | 56 | 50 56 | 51 |
| 4 | RADAR ACCESS DOOR | 30100028 | 54 | 19 13 | 27 |
| 5 | MAIN FRAME AT STN 53877 | 30100029 | 56 | 51 78 | 53 |
| 5 | DIVE BRAKE ACCOM STRUCTURE | 30100030 | 56 | 28 40 | 50 |
| 3 | COCKPIT DECKING | 30100031 | 52 | 154 09 | 18 |
| 4 | DUCT C F | 30100032 | 54 | 335 12 | 37 |
| 5 | DUCT D B | 30100033 | 56 | 292 90 | 54 |
| 3 | CANOPY ARCH F F | 30100034 | 52 | 58 06 | 21 |
| 3 | CANOPY ARCH C F | 30100035 | 52 | 15 98 | 26 |
| 5 | ACCESS PANEL STIFFNERS | 30100036 | 56 | 19 48 | 53 |
| 3 | NOSE U C SUPPORT STRUCTURE | 30100037 | 52 | 36 80 | 21 |
| 3 | CREW BULKHEADS | 30100038 | 52 | 105 31 | 20 |
| 4 | EQUIP BAY STRUCTURE | 30100039 | 54 | 36 83 | 28 |
| 3 | WINDSCREEN R N | 30100040 | 51 | 15 15 | 11 |
| 3 | WINDSCREEN F F | 30100041 | 52 | 115 24 | 14 |
| 6 | REMOV TAIL CONE | 30100042 | 59 | 655 00 | 79 |
| 6 | FAIRING UNDER RUDDER R F | 30100043 | 59 | 10 65 | 77 |
| 4 | DORSAL FAIRING AIR OUTLET | 30100044 | 54 | 21 10 | 29 |
| 5 | LIGHT HEAVY FORMERS E B | 30100045 | 58 | 22 00 | 66 |
| 5 | ENGINE ACCESS DOOR E B | 30100046 | 58 | 84 77 | 62 |
| 4 | SEAL IN MISSILE BAY | 30100047 | 54 | 6 18 | 29 |
| 4 | JOINT STRAPS AND MISC | 30100048 | 54 | 15 53 | 33 |
| 4 | FLOOR C F | 30100049 | 54 | 114 98 | 37 |

UNCLASSIFIED
NON CLASSIFIED

WEIGHTS C. OF G. TABULATION

(AIRFRAME)

REPORT NO. **7-0400-05 Issue 18**
 Sheet # 004-3

A.U.W. _____ LBS. COMPONENT _____ DATE **Sept. 1/55** PAGE _____

| | REFERENCE NO. | COMP. NO. | WEIGHT | H. ARM | V. ARM | H. MOMENT | V. MOMENT |
|-------|---------------|-----------|--------|--------|--------|-----------|-----------|
| | 3000000 | | | | | | |
| URE | 3010000 | | | | | | |
| | 3010000 | 51 | 12000 | 4650 | 11070 | 558000 | 1328400 |
| RS | 3010002 | 51 | 5538 | 9200 | 11400 | 509496 | 631332 |
| O | 3010003 | 51 | 9167 | 9250 | 11239 | 847948 | 1030279 |
| | 3010004 | 52 | 6741 | 19280 | 11535 | 1299665 | 777574 |
| | 3010005 | 54 | 13059 | 37050 | 14240 | 4838360 | 1859602 |
| | 3010006 | 56 | 8379 | 5381 | 110379 | 4508824 | 869656 |
| | 3010007 | 58 | 12548 | 6740 | 110786 | 8457477 | 1353427 |
| | 3010008 | 52 | 1280 | 18569 | 11800 | 237683 | 151040 |
| | 3010009 | 54 | 5173 | 36582 | 14162 | 1892387 | 732600 |
| | 3010010 | 56 | 500 | 50582 | 10015 | 252910 | 50075 |
| | 3010011 | 52 | 7717 | 18267 | 11827 | 1409664 | 912690 |
| | 3010012 | 54 | 27010 | 37576 | 13296 | 10149278 | 3591250 |
| | 3010013 | 56 | 9732 | 53436 | 10211 | 5200392 | 993735 |
| E B | 3010014 | 58 | 16804 | 66253 | 10397 | 11133154 | 1747112 |
| | 3010015 | 58 | 16999 | 66172 | 10543 | 11248578 | 1792205 |
| | 3010016 | 52 | 5311 | 18347 | 8622 | 974409 | 457914 |
| | 3010017 | 56 | 326 | 58858 | 9400 | 191877 | 30644 |
| | 3010018 | 58 | 5696 | 65893 | 9600 | 3753265 | 546816 |
| | 3010019 | 58 | 4352 | 66942 | 13915 | 2913316 | 605581 |
| B | 3010021 | 56 | 1890 | 53363 | 13415 | 1008561 | 253544 |
| | 3010022 | 52 | 53 | 25295 | 15250 | 13406 | 8083 |
| | 3010023 | 54 | 16148 | 39609 | 12590 | 6396061 | 2033033 |
| F | 3010024 | 54 | 451 | 47964 | 10700 | 216318 | 48257 |
| B | 3010025 | 56 | 11012 | 52518 | 9834 | 5783282 | 1082920 |
| ERON | 3010026 | 54 | 3961 | 27410 | 9195 | 1085710 | 364214 |
| B | 3010027 | 56 | 5056 | 51633 | 9103 | 2610564 | 460248 |
| | 3010028 | 54 | 1913 | 27485 | 9178 | 525788 | 175575 |
| 77 | 3010029 | 56 | 5178 | 53874 | 10454 | 2789596 | 541308 |
| CTURE | 3010030 | 56 | 2840 | 50524 | 9368 | 1434882 | 266051 |
| | 3010031 | 52 | 15409 | 18657 | 14850 | 2874857 | 2288237 |
| | 3010032 | 54 | 33512 | 37256 | 12919 | 12485231 | 4329415 |
| | 3010033 | 56 | 29290 | 54236 | 11804 | 15885724 | 3457392 |
| | 3010034 | 52 | 5806 | 21787 | 15992 | 1264953 | 928496 |
| | 3010035 | 52 | 1598 | 26095 | 16272 | 416998 | 260027 |
| S | 3010036 | 56 | 1948 | 53308 | 9662 | 1038440 | 188216 |
| CTURE | 3010037 | 52 | 3680 | 21188 | 9513 | 779718 | 350078 |
| | 3010038 | 52 | 10531 | 20932 | 12363 | 2204349 | 1301948 |
| | 3010039 | 54 | 3683 | 28389 | 13118 | 1045567 | 483136 |
| | 3010040 | 51 | 1515 | 11356 | 15014 | 172043 | 227462 |
| | 3010041 | 52 | 11524 | 14131 | 115014 | 1628456 | 1730213 |
| | 3010042 | 59 | 65500 | 79378 | 12500 | 51992590 | 8187500 |
| R F | 3010043 | 59 | 1065 | 77523 | 15600 | 825620 | 166140 |
| TLET | 3010044 | 54 | 2110 | 29296 | 16407 | 618146 | 346188 |
| B | 3010045 | 58 | 2200 | 66365 | 10700 | 1460030 | 235400 |
| | 3010046 | 58 | 8477 | 62696 | 8855 | 5314740 | 751486 |
| | 3010047 | 54 | 618 | 29400 | 11151 | 131692 | 68913 |
| | 3010048 | 54 | 1553 | 33614 | 13118 | 522025 | 203723 |
| | 3010049 | 54 | 11498 | 37830 | 11430 | 4349693 | 1314221 |

A. V. ROE CANADA LTD.
MALTON, ONT.

WEIGHTS C. OF G. TABULAT
(AIRFRAME)

PROJECT **C-105**

PREPARED BY

A.U.W.

LBS.

COMPONENT

UNCLASSIFIED
NON CLASSIFIE

| DESCRIPTION | | REFERENCE NO. | COMP. NO. | WEIGHT |
|---------------------------|----------------------------|---------------|-----------|--------|
| 3 | BULKHEAD AT STN 120 | 3010050 | 52 | 25641 |
| 3 | BULKHEAD AT STN 255 | 3010051 | 52 | 98642 |
| 4 | BULKHEAD AT STN 485 C F | 3010052 | 54 | 2074 |
| 4 | BULKHEAD AT STN 485 D B | 3010053 | 56 | 96064 |
| 5 | ENGINE TUNNEL E B | 3010054 | 58 | 381186 |
| 4 | INTEGRAL FUS FUEL TANK | 3010055 | 54 | 211541 |
| 3 | COCKPIT FLOOR | 3010056 | 52 | 52651 |
| 3 | SLING AND JACK FITTINGS FF | 3010057 | 52 | 2142 |
| 4 | SLING AND JACK FITTINGS CF | 3010058 | 54 | 9572 |
| 5 | AFTBURNER COOLING DUCT D B | 3010059 | 56 | 9615 |
| 5 | AFTBURNER COOLING DUCT E B | 3010060 | 58 | 11746 |
| 4 | DORSAL OVER FUEL TANK | 3010061 | 54 | 55744 |
| 4 | DORSAL HOT AIR DEFLECTOR | 3010062 | 54 | 15511 |
| 3 | SHEAR PANEL BELOW NAV ARCH | 3010063 | 52 | 17082 |
| | | | | 527268 |
| 9 | DIVE BRAKES | 3020000 | 72 | 111325 |
| | | | | 11132 |
| AIR INTAKES | | 3030000 | | |
| 3 | FORWARD NACELLE | 3030100 | 52 | 21622 |
| | | | | 2162 |
| 3 | LIP AND RAMP | 3030200 | 55 | 609652 |
| | | | | 60965 |
| PILOTS AND NAVIG CANOPIES | | 3040000 | | |
| 3 | PILOTS CANOPY | 3040100 | 53 | 220711 |
| | | | | 22071 |
| 3 | NAVIGATORS CANOPY | 3040200 | 53 | 115262 |
| | | | | 11526 |

WEIGHTS C. OF G. TABULATION

(AIRFRAME)

REPORT NO. 7-0400-05 Issue 18

Sheet 004-4

A.U.W. _____ Lbs. COMPONENT _____

DATE Sept. 1/55 PAGE _____

| | REFERENCE NO. | COMP. NO. | WEIGHT | H. ARM | V. ARM | H. MOMENT | V. MOMENT |
|---------|---------------|-----------|--------|--------|--------|-----------|-----------|
| | 301005052 | | 2564 | 12000 | 12672 | 307680 | 324910 |
| | 301005152 | | 9864 | 25500 | 11913 | 2515320 | 1175098 |
| C F | 301005254 | | 207 | 47835 | 10712 | 99018 | 22174 |
| D B | 301005356 | | 9606 | 48500 | 10712 | 4658910 | 1028995 |
| | 301005458 | | 38118 | 66784 | 12045 | 25456725 | 4591313 |
| NK | 301005554 | | 21154 | 39329 | 14609 | 8319657 | 3090388 |
| | 301005652 | | 5265 | 17705 | 11575 | 932168 | 609424 |
| NGS FF | 301005752 | | 214 | 25338 | 8967 | 54223 | 19189 |
| NGS CF | 301005854 | | 957 | 25721 | 15036 | 246150 | 143895 |
| ICT D B | 301005956 | | 961 | 57105 | 9288 | 548779 | 89258 |
| ICT E B | 301006058 | | 1174 | 62538 | 9325 | 734196 | 109476 |
| NK | 301006154 | | 5574 | 41293 | 14207 | 2301672 | 791898 |
| ECTOR | 301006254 | | 1551 | 33622 | 16500 | 521477 | 255915 |
| V ARCH | 301006352 | | 1708 | 25765 | 15330 | 440066 | 261836 |
| | | | 527268 | | | 244437764 | 64027125 |
| | 302000072 | | 11132 | 50815 | 9081 | 5656726 | 1010897 |
| | | | 11132 | | | 5656726 | 1010897 |
| | 3030000 | | | | | | |
| | 303010052 | | 2162 | 23620 | 9250 | 510664 | 199985 |
| | | | 2162 | | | 510664 | 199985 |
| | 303020055 | | 60965 | 21150 | 12184 | 12894098 | 7427976 |
| | | | 60965 | | | 12894098 | 7427976 |
| | 3040000 | | | | | | |
| | 304010053 | | 22071 | 17556 | 15976 | 3874785 | 3526063 |
| | | | 22071 | | | 3874785 | 3526063 |
| | 304020053 | | 11526 | 23448 | 16331 | 2702616 | 1882311 |
| | | | 11526 | | | 2702616 | 1882311 |

A. V. ROE CANADA LTD.
MALTON, ONT.

WEIGHTS C. OF G. TABULAT
(AIRFRAME)

PROJECT C-105 PREPARED BY _____ A.U.W. _____ Lbs. COMPONENT _____

| DESCRIPTION | | REFERENCE NO. | COMP. NO. | WEIGHT |
|--|---------------------------|---------------|-----------|---------|
| UNCLASIFIED NON CLASSIFIED UNDERCARRIAGE UP POSITION | | 4000000 | | |
| MAIN UNDERCARRIAGE GROUP | | 4010000 | | |
| 35 | MAIN UNDERCARRIAGE | 4010100 | 92 | 1847605 |
| | | | | 184760 |
| 12 | MAIN U C DOORS FAIRINGS | 4010200 | 92 | 287325 |
| | | | | 28732 |
| | MAIN U C HYDRAULICS | 4010300 | | |
| 57 | MAIN U C HYDRAULICS F F | 4010301 | 52 | 7781 |
| 57 | MAIN U C HYDRAULICS C F | 4010302 | 54 | 2943 |
| 57 | MAIN U C HYDRAULICS I W | 4010303 | 62 | 269125 |
| | | | | 27984 |
| NOSE UNDERCARRIAGE GROUP | | 4020000 | | |
| 36 | NOSE WHEEL UNDERCARRIAGE | 4020100 | 91 | 284341 |
| | | | | 28434 |
| 3 | NOSE U C DOOR AND FAIRING | 4020200 | 91 | 25921 |
| | | | | 2592 |
| | NOSE U C HYDRAULICS | 4020300 | | |
| 57 | NOSE U C HYDRAULICS F F | 4020301 | 52 | 102762 |
| 57 | NOSE U C HYDRAULICS C F | 4020302 | 54 | 16193 |
| | | | | 11895 |

WEIGHTS C. OF G. TABULATION

(AIRFRAME)

REPORT NO. 7-0400-05 Issue 18

Sheet # 004-5

A.U.W. _____ LBS. _____ COMPONENT _____

DATE Sept. 1/55 PAGE _____

| | REFERENCE NO. | COMP. NO. | WEIGHT | H. ARM | V. ARM | H. MOMENT | V. MOMENT |
|----------|---------------|-----------|---------|--------|--------|-----------|-----------|
| POSITION | 4000000 | | | | | | |
| GROUP | 4010000 | | | | | | |
| | 4010100 | 92 | 1847.60 | 539.88 | 141.00 | 997482.29 | 260511.60 |
| | | | 1847.60 | | | 997482.29 | 260511.60 |
| INGS | 4010200 | 92 | 287.32 | 539.21 | 136.40 | 154925.82 | 39190.45 |
| | | | 287.32 | | | 154925.82 | 39190.45 |
| | 4010300 | | | | | | |
| F F | 4010301 | 52 | 778 | 150.06 | 121.59 | 1167.47 | 945.97 |
| C F | 4010302 | 54 | 294 | 383.63 | 117.97 | 1127.87 | 346.83 |
| I W | 4010303 | 62 | 269.12 | 547.79 | 138.43 | 147421.24 | 37254.28 |
| | | | 279.84 | | | 149716.58 | 38547.08 |
| GROUP | 4020000 | | | | | | |
| FACE | 4020100 | 91 | 284.34 | 165.18 | 100.04 | 46967.28 | 28445.37 |
| | | | 284.34 | | | 46967.28 | 28445.37 |
| IRING | 4020200 | 91 | 259.2 | 163.71 | 89.22 | 4243.36 | 2312.58 |
| | | | 259.2 | | | 4243.36 | 2312.58 |
| | 4020300 | | | | | | |
| F F | 4020301 | 52 | 1027.6 | 204.56 | 102.80 | 21020.59 | 10563.73 |
| C F | 4020302 | 54 | 161.9 | 320.50 | 111.26 | 5188.90 | 1801.30 |
| | | | 118.95 | | | 26209.49 | 12365.03 |

A. V. ROE CANADA LTD.

MALTON, ONT.

WEIGHTS C. OF G. TABULATION

(AIRFRAME)

PROJECT **C-105** PREPARED BY _____ A.U.W. _____ LBS. COMPONENT _____

| DESCRIPTION | | REFERENCE NO. | COMP. NO. | WEIGHT | H. A. |
|--------------|---------------------------|---------------|-----------|---------|-------|
| ENGINE GROUP | | 5000000 | | | |
| 41 | ENGINES J 75 | 5010001 | | 19400 | 564 |
| 41 | ENGINES J 75 | 5010002 | | 1245300 | 663 |
| | | | | 1264700 | |
| 49 | GEAR BOX AND DRIVE | 5020000 | | 15000 | 606 |
| | | | | 15000 | |
| | ENGINE CONTROLS | 5030000 | | | |
| 47 | ENGINE CONTROLS F F | 5030001 | 52 | 1161 | 161 |
| 47 | ENGINE CONTROLS C F | 5030002 | 54 | 315 | 302 |
| 47 | ENGINE CONTROLS D B | 5030003 | 56 | 336 | 506 |
| 47 | ENGINE CONTROLS E B | 5030004 | 58 | 698 | 633 |
| | | | | 2510 | |
| 43 | PNEUMATIC STARTING SYSTEM | 5040000 | | 7000 | 610 |
| | | | | 7000 | |
| 66 | ENGINE ANTIICING | 5050000 | | 6575 | 564 |
| | | | | 6575 | |
| | FIRE EXT SYSTEM | 5060000 | | | |
| 64 | FIRE EXT SYSTEM D B | 5060001 | | 548 | 573 |
| 64 | FIRE EXT SYSTEM E B | 5060002 | | 4452 | 617 |
| 132 | ENGINE FIRE EXT FLUID | 5060003 | | 4000 | 608 |
| | | | | 9000 | |
| 42 | ENGINE MTGS AND BRACKETS | 5070000 | | 2211 | 1649 |
| | | | | 2211 | |
| | FUEL SYSTEM | 5080000 | | | |
| 54 | FUEL SYSTEM C F | 5080001 | 54 | 10494 | 406 |
| 54 | FUEL SYSTEM D B | 5080002 | 56 | 8712 | 537 |
| 54 | FUEL SYSTEM E B | 5080003 | 58 | 4547 | 616 |
| 54 | FUEL SYSTEM I W | 5080004 | 62 | 46429 | 557 |
| | | | | 70182 | |

WEIGHTS C. OF G. TABULATION

(AIRFRAME)

REPORT NO. 7-0400-05 Issue 18
 Sheet # 004-6
 DATE Sept. 1/55 PAGE

A.U.W. _____ LBS. COMPONENT _____

| REFERENCE NO. | COMP. NO. | WEIGHT | H. ARM | V. ARM | H. MOMENT | V. MOMENT |
|---------------|-----------|---------|--------|--------|-----------|-----------|
| 5000000 | | | | | | |
| 5010001 | | 19400 | 56470 | 11600 | 10955180 | 2250400 |
| 5010002 | | 1245300 | 66387 | 11785 | 826717311 | 146758605 |
| | | 1264700 | | | 837672491 | 149009005 |
| 5020000 | | 15000 | 60600 | 9466 | 9090000 | 1419900 |
| | | 15000 | | | 9090000 | 1419900 |
| 5030000 | | | | | | |
| 5030001 | 52 | 1161 | 16110 | 12398 | 187037 | 143941 |
| 5030002 | 54 | 315 | 30279 | 11785 | 95379 | 37123 |
| 5030003 | 56 | 336 | 50693 | 12875 | 170328 | 43260 |
| 5030004 | 58 | 698 | 63397 | 10796 | 442511 | 75356 |
| | | 2510 | | | 895255 | 299680 |
| STEM 5040000 | | 7000 | 61000 | 9475 | 4270000 | 663250 |
| | | 7000 | | | 4270000 | 663250 |
| 5050000 | | 6575 | 56453 | 11437 | 3711785 | 751983 |
| | | 6575 | | | 3711785 | 751983 |
| 5060000 | | | | | | |
| 5060001 | | 548 | 57392 | 11800 | 314508 | 64664 |
| 5060002 | | 4452 | 61711 | 113035 | 2747374 | 580318 |
| 5060003 | | 4000 | 60850 | 12900 | 2434000 | 516000 |
| | | 9000 | | | 5495882 | 1160982 |
| ETS 5070000 | | 22111 | 64529 | 13267 | 14268007 | 2933466 |
| | | 22111 | | | 14268007 | 2933466 |
| 5080000 | | | | | | |
| 5080001 | 54 | 10494 | 40626 | 14180 | 4263292 | 1488049 |
| 5080002 | 56 | 8712 | 53717 | 13106 | 4679825 | 1141795 |
| 5080003 | 58 | 4547 | 61669 | 13635 | 2804089 | 619983 |
| 5080004 | 62 | 46429 | 55756 | 14756 | 25886953 | 6851063 |
| | | 70182 | | | 37634159 | 10100890 |

A. V. ROE CANADA LTD.
MALTON, ONT.

WEIGHTS C. OF G. TABULATION
(AIRFRAME)

PROJECT C-105 PREPARED BY _____ A.U.W. _____ Lbs. COMPONENT _____

| | | REFERENCE NO. | COMP. NO. | WEIGHT | H. A. |
|--|----------------------------|---------------|-----------|--------|-------|
| UNCLASSIFIED NON CLASSIFIED | | | | | |
| | FLYING CONTROLS GROUP | 6000000 | | | |
| | MECHANICAL CONTROLS | 6010000 | | | |
| 56 | MECHANICAL CONTROLS F F | 6010001 | 52 | 7735 | 153 |
| 56 | MECHANICAL CONTROLS C F | 6010002 | 54 | 809 | 362 |
| 56 | MECHANICAL CONTROLS D B | 6010003 | 56 | 759 | 533 |
| 56 | MECHANICAL CONTROLS F IN | 6010004 | 83 | 8344 | 787 |
| 56 | MECHANICAL CONTROLS I W | 6010005 | 62 | 36744 | 719 |
| 56 | MECHANICAL CONTROLS O W | 6010006 | 64 | 22952 | 770 |
| | | | | 77343 | |
| | FLYING CONTROLS HYDRAULICS | 6020000 | | | |
| 57 | FLYING CONT HYDRAULICS D B | 6020001 | 56 | 992 | 563 |
| 57 | FLYING CONT HYDRAULICS E B | 6020002 | 58 | 30040 | 644 |
| | | | | 31032 | |
| | AUTO PILOT AND TIE IN | 6030000 | | | |
| 61 | AUTO PILOT AND TIE IN R N | 6030001 | 51 | 5700 | 99 |
| 61 | AUTO PILOT AND TIE IN F F | 6030002 | 52 | 2200 | 235 |
| 61 | AUTO PILOT AND TIE IN C F | 6030003 | 54 | 800 | 256 |
| 61 | AUTO PILOT AND TIE IN D B | 6030004 | 56 | 2100 | 529 |
| | | | | 10800 | |
| 57 | ELEVATOR HYDRAULICS | 6050000 | 62 | 21743 | 701 |
| | | | | 21743 | |
| | AILERONS HYDRAULICS | 6060000 | | | |
| 57 | AILERON HYDRAULICS E B | 6060001 | 58 | 886 | 693 |
| 57 | AILERONS HYDRAULICS I W | 6060002 | 62 | 3885 | 707 |
| 57 | AILERONS HYDRAULICS O W | 6060003 | 64 | 15229 | 740 |
| | | | | 20000 | |
| 57 | RUDDER HYDRAULICS | 6070000 | 83 | 7608 | 765 |
| | | | | 7608 | |
| 57 | DIVE BRAKE HYDRAULICS | 6080000 | 56 | 5300 | 517 |
| | | | | 5300 | |

WEIGHTS C. OF G. TABULATION

(AIRFRAME)

REPORT NO. 7-0400-05 Issue 18

Sheet # 004-7

DATE Sept. 1/55

PAGE

A.U.W. LBS. COMPONENT

DATE

| REFERENCE NO. | COMP. NO. | WEIGHT | H. ARM | V. ARM | H. MOMENT | V. MOMENT |
|---------------|-----------|--------|--------|--------|-----------|-----------|
| 6000000 | | | | | | |
| 6010000 | | | | | | |
| 6010001 | 52 | 7735 | 15373 | 11567 | 1189102 | 894707 |
| 6010002 | 54 | 8093 | 36271 | 11830 | 293432 | 95705 |
| 6010003 | 56 | 7595 | 3350 | 12894 | 404927 | 97865 |
| 6010004 | 83 | 8344 | 78724 | 21858 | 6568731 | 1823832 |
| 6010005 | 62 | 3674 | 471973 | 14316 | 26445759 | 5260271 |
| 6010006 | 64 | 2295 | 277000 | 13552 | 17673040 | 3110455 |
| | | 77343 | | | 52574991 | 11282835 |
| 6020000 | | | | | | |
| 6020001 | 56 | 9925 | 56338 | 12500 | 558873 | 124000 |
| 6020002 | 58 | 30040 | 64428 | 12011 | 19354171 | 3608104 |
| | | 31032 | | | 19913044 | 3732104 |
| 6030000 | | | | | | |
| 6030001 | 51 | 5700 | 9957 | 12634 | 567549 | 720138 |
| 6030002 | 52 | 2200 | 23509 | 13036 | 517198 | 286792 |
| 6030003 | 54 | 8002 | 25600 | 11400 | 204800 | 91200 |
| 6030004 | 56 | 2100 | 52933 | 15300 | 1111593 | 321300 |
| | | 10800 | | | 2401140 | 1419430 |
| 6050000 | 62 | 21743 | 70170 | 14584 | 15257063 | 3170999 |
| | | 21743 | | | 15257063 | 3170999 |
| 6060000 | | | | | | |
| 6060001 | 58 | 8866 | 69364 | 13500 | 614565 | 119610 |
| 6060002 | 62 | 3885 | 70760 | 14600 | 2749026 | 567210 |
| 6060003 | 64 | 1522 | 97401 | 113591 | 11271135 | 2069773 |
| | | 20000 | | | 14634726 | 2756593 |
| 6070000 | 83 | 7608 | 76555 | 20558 | 5824304 | 1564053 |
| | | 7608 | | | 5824304 | 1564053 |
| 6080000 | 56 | 5300 | 51729 | 9446 | 2741637 | 500638 |
| | | 5300 | | | 2741637 | 500638 |

A. V. ROE CANADA LTD.

MALTON, ONT.

WEIGHTS C. OF G. TABULAT

(AIRFRAME)

PROJECT C-105

PREPARED BY _____

A.U.W. _____

LBS. _____

COMPONENT _____

| DESCRIPTION | | REFERENCE NO. | COMP. NO. | WEIGHT | H |
|-------------------------|----------------------------|---------------|-----------|--------|---|
| FIXED EQUIPMENT GROUP | | 7000000 | | | |
| INSTRUMENTS | | 7010000 | | | |
| 59 | INSTRUMENTS R N | 7010001 | 51 | 400 | |
| 59 | INSTRUMENTS F F | 7010002 | 52 | 51301 | |
| 106 | NAVIG TABLE AND STOWAGE | 7010004 | 52 | 2002 | |
| | | | | 5730 | |
| OXYGEN SYSTEM | | 7030000 | | | |
| 63 | OXYGEN SYSTEM F F | 7030001 | 52 | 29051 | |
| 63 | OXYGEN SYSTEM C F | 7030002 | 54 | 17072 | |
| | | | | 4612 | |
| AIR CONDITIONING SYSTEM | | 7040000 | | | |
| 65 | AIR CONDITIONING R N | 7040001 | 51 | 442 | |
| 65 | AIR CONDITIONING F F | 7040002 | 52 | 91082 | |
| 65 | AIR CONDITIONING C F | 7040003 | 54 | 431453 | |
| 65 | AIR CONDITIONING D B | 7040004 | 56 | 49885 | |
| 65 | AIR CONDITIONING E B | 7040005 | 58 | 36756 | |
| 65 | AIR CONDITIONING IN WING | 7040006 | 62 | 1373 | |
| 66 | WINDSCREEN DEMISTING | 7040007 | 52 | 10001 | |
| | | | | 62495 | |
| HYDRAULICS MAIN SYSTEM | | 7050000 | | | |
| 57 | HYDRAULICS MAIN SYSTEM D B | 7050001 | 56 | 82665 | |
| 57 | HYDRAULICS MAIN SYSTEM E B | 7050002 | 58 | 133006 | |
| | | | | 21566 | |
| 62 | ARMAMENT PROVISIONS | 7060000 | 54 | 31343 | |
| | | | | 3134 | |
| BRAKE PARACHUTE | | 7080000 | | | |
| 39 | BRAKE PARACHUTE F F | 7080001 | 52 | 1711 | |
| 39 | BRAKE PARACHUTE C F | 7080002 | 54 | 943 | |
| 39 | BRAKE PARACHUTE D B | 7080003 | 56 | 445 | |
| 39 | BRAKE PARACHUTE E B | 7080004 | 58 | 516 | |
| 39 | BRAKE PARACHUTE R F | 7080005 | 59 | 64438 | |
| | | | | 6803 | |
| ELECTRICAL SYSTEM | | 7090000 | | | |

WEIGHTS C. OF G. TABULATION

(AIRFRAME)

REPORT NO. 7-0400-05 Issue 18

Sheet # 004-8

A.U.W. _____ Lbs. COMPONENT _____

DATE Sept. 1/55 PAGE _____

| REFERENCE NO. | COMP. NO. | WEIGHT | H. ARM | V. ARM | H. MOMENT | V. MOMENT |
|---------------|-----------|--------|--------|--------|-----------|-----------|
| 7000000 | | | | | | |
| 7010000 | | | | | | |
| 7010001 | 51 | 400 | 4800 | 10800 | 19200 | 43200 |
| 7010002 | 52 | 5130 | 1512 | 113958 | 775707 | 716045 |
| 7010004 | 52 | 2002 | 2200 | 013000 | 44000 | 26000 |
| | | 5730 | | | 838907 | 785245 |
| 7030000 | | | | | | |
| 7030001 | 52 | 2905 | 1955 | 712463 | 568131 | 362050 |
| 7030002 | 54 | 1707 | 2625 | 516115 | 448173 | 275083 |
| | | 4612 | | | 1016304 | 637133 |
| 7040000 | | | | | | |
| 7040001 | 51 | 442 | 9785 | 12827 | 43250 | 56695 |
| 7040002 | 52 | 9108 | 2205 | 411946 | 2008678 | 1088042 |
| 7040003 | 54 | 43145 | 3054 | 013782 | 13176483 | 5946244 |
| 7040004 | 56 | 4988 | 5303 | 113346 | 2645186 | 665698 |
| 7040005 | 58 | 3675 | 6354 | 713590 | 2335352 | 499433 |
| 7040006 | 62 | 1373 | 8960 | 14300 | 53375 | 19591 |
| 7040007 | 52 | 1000 | 1250 | 013800 | 125000 | 138000 |
| | | 62495 | | | 20387324 | 8413703 |
| 7050000 | | | | | | |
| 7050001 | 56 | 8266 | 5715 | 612123 | 4724515 | 1002087 |
| 7050002 | 58 | 13300 | 6031 | 411503 | 8021762 | 1529899 |
| | | 21566 | | | 12746277 | 2531986 |
| 7060000 | | | | | | |
| 7060000 | 54 | 3134 | 3276 | 510445 | 1026855 | 327346 |
| | | 3134 | | | 1026855 | 327346 |
| 7080000 | | | | | | |
| 7080001 | 52 | 1711 | 6768 | 12451 | 28673 | 21291 |
| 7080002 | 54 | 9437 | 0851 | 11700 | 34860 | 10998 |
| 7080003 | 56 | 4452 | 7451 | 13606 | 23208 | 5987 |
| 7080004 | 58 | 5167 | 7271 | 13406 | 34541 | 6837 |
| 7080005 | 59 | 6443 | 8195 | 512628 | 5280361 | 813622 |
| | | 6803 | | | 5401643 | 858735 |
| 7090000 | | | | | | |

A. V. ROE CANADA LTD.
MALTON, ONT.

WEIGHTS C. OF G. TABULATION
(AIRFRAME)

PROJECT C-105 PREPARED BY _____ A.U.W. _____ LBS. COMPONENT _____

| DESCRIPTION | | REFERENCE NO. | COMP. NO. | WEIGHT | H. |
|----------------------------|----------------------------|---------------|-----------|--------|----|
| UNCLASSIFIED | | | | | |
| NON CLASSIFIED | | | | | |
| | JUNCTION BOXES | 7090100 | | | |
| 60 | JUNCTION BOXES R N | 7090101 | 51 | 500 | 8 |
| 60 | JUNCTION BOXES F F | 7090102 | 52 | 3550 | 19 |
| 60 | JUNCTION BOXES C F | 7090103 | 54 | 1200 | 35 |
| 60 | JUNCTION BOXES A I | 7090104 | 55 | 300 | 59 |
| 60 | JUNCTION BOXES E B | 7090105 | 58 | 400 | 68 |
| 60 | JUNCTION BOXES I W | 7090106 | 62 | 300 | 57 |
| | | | | 6250 | |
| ALTERNATOR SYSTEM | | 7090200 | | | |
| 60 | ALTERNATOR SYSTEM F F | 7090201 | 52 | 6886 | 15 |
| 60 | ALTERNATOR SYSTEM C F | 7090202 | 54 | 2394 | 37 |
| 60 | ALTERNATOR SYSTEM D B | 7090203 | 56 | 26498 | 50 |
| 60 | ALTERNATOR SYSTEM ENGINE | 7090204 | | 9400 | 54 |
| | | | | 45178 | |
| GENERAL ELECTRICAL CIRCUIT | | 7090300 | | | |
| 60 | GEN ELECT CIRCUITS R N | 7090301 | 51 | 310 | 11 |
| 60 | GEN ELECT CIRCUITS F F | 7090302 | 52 | 10632 | 16 |
| 60 | GEN ELECT CIRCUITS C F | 7090303 | 54 | 6754 | 34 |
| 60 | GEN ELECT CIRCUITS D B | 7090304 | 56 | 3720 | 51 |
| 60 | GEN ELECT CIRCUITS E B | 7090305 | 58 | 5766 | 64 |
| 60 | GEN ELECT CIRCUITS R F | 7090306 | 59 | 5237 | 77 |
| 60 | GEN ELECT CIRCUITS I W | 7090307 | 62 | 3476 | 54 |
| 60 | GEN ELECT CIRCUITS O W | 7090308 | 64 | 3807 | 73 |
| 60 | GEN ELECT CIRCUITS FIN | 7090309 | 83 | 1208 | 7 |
| | | | | 26491 | |
| L P PNEUMATICS | | 7100000 | | | |
| 58 | L P PNEUMATICS F F | 7100001 | 52 | 1522 | 21 |
| 58 | L P PNEUMATICS C F | 7100002 | 54 | 1382 | 7 |
| | | | | 1660 | |
| OIL AND HYD FLD COOLING | | 7110000 | | | |
| 57 | OIL AND HYD FLD COOLING DB | 7110001 | 56 | 9686 | 55 |
| 57 | OIL AND HYD FLD COOLING EB | 7110002 | 58 | 2294 | 61 |
| | | | | 11980 | |
| 65 | INTAKE DEICING | 7120000 | 52 | 5060 | 20 |
| | | | | 5060 | |
| RADIO AND RADAR FIXED | | 7140000 | | | |
| 61 | RADIO AND RADAR FIXED R N | 7140001 | 51 | 22500 | 9 |
| 61 | RADIO AND RADAR FIXED F F | 7140002 | 52 | 17010 | 20 |

WEIGHTS C. OF G. TABULATION

(AIRFRAME)

REPORT NO. 7-0400-05 Issue 18

Sheet # 004-9

DATE ~~1/55~~ PAGE

A.U.W. Lbs. COMPONENT

IFIED
SIFIE

INE

RCUIT

N
F
B
B
F
W
H

NG
NG DB
NG EB

R N
F F

| REFERENCE NO. | COMP. NO. | WEIGHT | H. ARM | V. ARM | H. MOMENT | V. MOMENT |
|---------------|-----------|--------|--------|--------|-----------|-----------|
| 7090100 | | | | | | |
| 7090101 | 51 | 500 | 8500 | 11000 | 42500 | 55000 |
| 7090102 | 52 | 3550 | 19927 | 11825 | 707409 | 419788 |
| 7090103 | 54 | 1200 | 35000 | 12667 | 420000 | 152004 |
| 7090104 | 55 | 300 | 59100 | 12000 | 177300 | 36000 |
| 7090105 | 58 | 400 | 68000 | 13000 | 272000 | 52000 |
| 7090106 | 62 | 300 | 57000 | 13500 | 171000 | 40500 |
| | | 6250 | | | 1790209 | 755292 |
| 7090200 | | | | | | |
| 7090201 | 52 | 6886 | 15609 | 10818 | 1074836 | 744927 |
| 7090202 | 54 | 2394 | 37785 | 11600 | 904573 | 277704 |
| 7090203 | 56 | 26498 | 50570 | 11903 | 13400039 | 3154057 |
| 7090204 | | 9400 | 54800 | 11600 | 5151200 | 1090400 |
| | | 45178 | | | 20530648 | 5267088 |
| 7090300 | | | | | | |
| 7090301 | 51 | 310 | 11177 | 11000 | 34649 | 34100 |
| 7090302 | 52 | 10632 | 16488 | 12883 | 1753004 | 1369721 |
| 7090303 | 54 | 6754 | 34195 | 12407 | 2309530 | 837969 |
| 7090304 | 56 | 3720 | 51581 | 12486 | 1918813 | 464479 |
| 7090305 | 58 | 5766 | 4708 | 12121 | 372718 | 69817 |
| 7090306 | 59 | 523 | 77768 | 12868 | 406727 | 67300 |
| 7090307 | 62 | 3476 | 5422 | 114613 | 1884722 | 507948 |
| 7090308 | 64 | 380 | 73750 | 12500 | 280250 | 47500 |
| 7090309 | 63 | 120 | 87700 | 29200 | 105240 | 35040 |
| | | 26491 | | | 9065653 | 3433874 |
| 7100000 | | | | | | |
| 7100001 | 52 | 1522 | 21236 | 13306 | 323212 | 202517 |
| 7100002 | 54 | 138 | 27018 | 13731 | 37265 | 18949 |
| | | 1660 | | | 360497 | 221466 |
| 7110000 | | | | | | |
| 7110001 | 56 | 9686 | 55654 | 10340 | 5390646 | 1001532 |
| 7110002 | 58 | 22946 | 1591 | 10769 | 1412898 | 247041 |
| | | 11980 | | | 6803544 | 1248573 |
| 7120000 | 52 | 5060 | 20455 | 11376 | 1035023 | 575626 |
| | | 5060 | | | 1035023 | 575626 |
| 7140000 | | | | | | |
| 7140001 | 51 | 22500 | 9000 | 10444 | 2025000 | 2349900 |
| 7140002 | 52 | 17010 | 20042 | 11204 | 3409144 | 1905800 |

A. V. ROE CANADA LTD.
MALTON, ONT.

WEIGHTS C. OF G. TABULAT
(AIRFRAME)

PROJECT C-105 PREPARED BY _____ A.U.W. _____ LBS. COMPONENT _____

| DESCRIPTION | | REFERENCE NO. | COMP. NO. | WEIGHT |
|-------------|----------------------------|---------------|-----------|--------|
| 61 | RADIO AND RADAR FIXED F | 7140003 | 54 | 11470 |
| 61 | RADIO AND RADAR FIXED D B | 7140004 | 56 | 5720 |
| 61 | RADIO AND RADAR FIXED F IN | 7140005 | 83 | 2007 |
| 61 | RADIO AND RADAR FIXED I W | 7140006 | 62 | 5107 |
| | EJECTOR SEATS | | | 57410 |
| | RADAR POWER SUPPLIES | 7150000 | | |
| 61 | RADAR POWER SUPPLIES R N | 7150001 | 51 | 7700 |
| 61 | RADAR POWER SUPPLIES C F | 7150002 | 54 | 27000 |
| | | | | 34700 |
| 60 | CANOPY ACTUATION | 7160000 | 52 | 4700 |
| | | | | 4700 |
| 3 | CABIN CONSOLES | 7170000 | 52 | 2085 |
| | | | | 2085 |
| 60 | RADAR DOOR ACTUATION | 7180000 | 54 | 1000 |
| | | | | 1000 |
| 65 | RADOME ANTIICING | 7190000 | 51 | 1680 |
| | | | | 1680 |
| 69 | CABIN INSULATION | 7200000 | 52 | 1191 |
| | | | | 1191 |
| 3 | COCKPIT PRESSURE SEALING | 7210000 | 52 | 2000 |
| | | | | 2000 |

WEIGHTS C. OF G. TABULATION

(AIRFRAME)

REPORT NO. 7-0400-05 Issue 18

Sheet # 004-10

A.U.W. _____ LBS. COMPONENT _____

DATE Sept. 1/55 PAGE _____

| | REFERENCE NO. | COMP. NO. | WEIGHT | H. ARM | V. ARM | H. MOMENT | V. MOMENT |
|--------|---------------|-----------|--------|--------|--------|-----------|-----------|
| ED | | | | | | | |
| FILE F | 7140003 | 54 | 11470 | 29461 | 12000 | 3379177 | 1376400 |
| D D B | 7140004 | 56 | 5720 | 52932 | 12000 | 3027710 | 686400 |
| D F IN | 7140005 | 83 | 200 | 70481 | 16000 | 140962 | 32000 |
| D I W | 7140006 | 62 | 510 | 70000 | 13000 | 357000 | 66300 |
| | | | 57410 | | | 12338993 | 6416800 |
| | 7150000 | | | | | | |
| R N | 7150001 | 51 | 7700 | 90121 | 2280 | 693924 | 945560 |
| C F | 7150002 | 54 | 27000 | 26800 | 10600 | 7236000 | 2862000 |
| | | | 34700 | | | 7929924 | 3807560 |
| | 7160000 | 52 | 4700 | 22343 | 15683 | 1050121 | 737101 |
| | | | 4700 | | | 1050121 | 737101 |
| | 7170000 | 52 | 2085 | 17701 | 12538 | 369066 | 261417 |
| | | | 2085 | | | 369066 | 261417 |
| | 7180000 | 54 | 1000 | 26800 | 9500 | 268000 | 95000 |
| | | | 1000 | | | 268000 | 95000 |
| | 7190000 | 51 | 1680 | 66351 | 2440 | 111468 | 208992 |
| | | | 1680 | | | 111468 | 208992 |
| | 7200000 | 52 | 1191 | 17924 | 13000 | 213475 | 154830 |
| | | | 1191 | | | 213475 | 154830 |
| LING | 7210000 | 52 | 2000 | 18601 | 13000 | 372020 | 260000 |
| | | | 2000 | | | 372020 | 260000 |

A. V. ROE CANADA LTD.
MALTON, ONT.

WEIGHTS C. OF G. TABULATION
(AIRFRAME)

PROJECT C-105 PREPARED BY _____ A.U.W. _____ LBS. COMPONENT _____

| | DESCRIPTION | REFERENCE NO. | COMP. NO. | WEIGHT | H |
|-----|--|---------------|-----------|--------|----|
| | REMOVABLE EQUIPMENT GROUP | 8000000 | | | |
| | UNCLASSIFIED NON CLASSIFIED | | | | |
| 69 | EJECTOR SEATS | 801010052 | | 20400 | 20 |
| | INTERPHONE SYSTEM | | | 20400 | |
| 107 | EMERGENCY PROVISIONS | 801020152 | | 1145 | 16 |
| 133 | SIGNAL PISTOL CARTRIDGES | 801020252 | | 200 | 15 |
| 132 | HAND FIRE EXT FLUID | 801020352 | | 350 | 18 |
| | | | | 1695 | |
| | RADAR REMOV GROUP | 8020000 | | | |
| | RADAR REMOVABLE | 8020100 | | | |
| 61 | RADAR REMOVABLE R N | 802010151 | | 81896 | 7 |
| 61 | RADAR REMOVABLE F F | 802010252 | | 9614 | 18 |
| 61 | RADAR REMOVABLE C F | 802010354 | | 730 | 26 |
| 61 | RADAR REMOVABLE D B | 802010456 | | 950 | 5 |
| | | | | 93190 | |
| | FLARE OUT ALTIMETER | 8020200 | | | |
| 61 | FLARE OUT ALTIMETER FF | 802020152 | | 50 | 15 |
| 61 | FLARE OUT ALTIMETER CF | 802020254 | | 1500 | 26 |
| | | | | 1550 | |
| 61 | ELECT MISSILE CONTROL C F | 802040054 | | 17300 | 27 |
| | | | | 17300 | |
| 61 | DATA LINK | 802050054 | | 6800 | 26 |
| | | | | 6800 | |
| 61 | OMNI DME | 802060054 | | 7000 | 26 |
| | | | | 7000 | |
| 61 | J2 COMPASS O W | 802070064 | | 130 | 70 |
| | | | | 130 | |
| | RADIO REMOV GROUP | 8030000 | | | |

WEIGHTS C. OF G. TABULATION

(AIRFRAME)

REPORT NO. 7-0400-05 Issue 18

Sheet # 004-11

DATE Sept. 1/55 PAGE

A.U.W. LBS. COMPONENT

| REFERENCE NO. | COMP. NO. | WEIGHT | H. ARM | V. ARM | H. MOMENT | V. MOMENT |
|---------------|-----------|--------|--------|--------|-----------|-----------|
| 8000000 | | | | | | |
| 801010052 | | 20400 | 20010 | 13625 | 4082040 | 2779500 |
| | | 20400 | | | 4082040 | 2779500 |
| 801020152 | | 1145 | 16302 | 13016 | 186658 | 149033 |
| 801020252 | | 200 | 15600 | 12900 | 31200 | 25800 |
| 801020352 | | 350 | 18150 | 13320 | 63525 | 46620 |
| | | 1695 | | | 281383 | 221453 |
| 8020000 | | | | | | |
| 8020100 | | | | | | |
| 802010151 | | 81896 | 7897 | 11436 | 6467327 | 9365627 |
| 802010252 | | 9614 | 18173 | 12382 | 1747152 | 1190405 |
| 802010354 | | 730 | 26800 | 11000 | 195640 | 80300 |
| 802010456 | | 950 | 53950 | 12000 | 512525 | 114000 |
| | | 93190 | | | 8922644 | 10750332 |
| 8020200 | | | | | | |
| 802020152 | | 50 | 15010 | 13200 | 7505 | 6600 |
| 802020254 | | 1500 | 26800 | 11400 | 402000 | 171000 |
| | | 1550 | | | 409505 | 177600 |
| 802040054 | | 17300 | 27366 | 10800 | 4734318 | 1868400 |
| | | 17300 | | | 4734318 | 1868400 |
| 802050054 | | 6800 | 26800 | 12000 | 1822400 | 816000 |
| | | 6800 | | | 1822400 | 816000 |
| 802060054 | | 7000 | 26800 | 11400 | 1876000 | 798000 |
| | | 7000 | | | 1876000 | 798000 |
| 802070064 | | 130 | 70400 | 13200 | 91520 | 17160 |
| | | 130 | | | 91520 | 17160 |
| 8030000 | | | | | | |

A. V. ROE CANADA LTD.
MALTON, ONT.

WEIGHTS C. OF G. TABULA
(AIRFRAME)

PROJECT C-105 PREPARED BY _____ A.U.W. _____ LBS. _____ COMPONENT _____

| DESCRIPTION | | REFERENCE NO. | COMP. NO. | WEIGHT |
|-------------|--------------------------|---------------|-----------|--------|
| | RADIO REMOV FIN | 8030100 | | |
| 61 | RADIO REMOV F F | 8030101 | 52 | 30 |
| 61 | RADIO REMOV C F | 8030102 | 54 | 4500 |
| 61 | RADIO REMOV FIN | 8030103 | 83 | 200 |
| | | | | 5000 |
| | INTERPHONE SYSTEM | 8030200 | | |
| 61 | INTERPHONE SYSTEM F F | 8030201 | 52 | 1070 |
| 61 | INTERPHONE SYSTEM C F | 8030202 | 54 | 430 |
| | | | | 1500 |
| | RADIO COMPASS ARNG | 8030300 | | |
| 61 | RADIO COMPASS ARNG F F | 8030301 | 52 | 3100 |
| 61 | RADIO COMPASS ARNG C F | 8030302 | 54 | 5550 |
| | | | | 8650 |
| | IFF | 8040000 | | |
| 61 | IFF R N | 8040001 | 51 | 6000 |
| 61 | IFF D B | 8040002 | 56 | 5270 |
| 61 | IFF FIN | 8040003 | 83 | 1200 |
| | | | | 12470 |
| | MISSILE PACK | 8050000 | | |
| | MISSILE PACK STRUCTURE | 8050100 | 54 | 67617 |
| | | | | 67617 |
| 110 | MISSILE PACK MECHANISMS | 8050200 | 54 | 41048 |
| | | | | 41048 |
| 110 | MISSILE PACK HYDRAULICS | 8050300 | 54 | 29300 |
| | | | | 29300 |
| 110 | MISSILE PACK ELECTRONICS | 8050400 | 54 | 31800 |
| | | | | 31800 |

WEIGHTS C. OF G. TABULATION

(AIRFRAME)

REPORT NO. 7-0400-05 Issue 18
~~XXXXXXXXXX~~
 Sheet # 004-12

A.U.W. _____ LBS. COMPONENT _____ DATE Sept. 1/55 PAGE _____

| | REFERENCE NO. | COMP. NO. | WEIGHT | H. ARM | V. ARM | H. MOMENT | V. MOMENT |
|-----|---------------|-----------|--------|--------|--------|-----------|-----------|
| | 8030100 | | | | | | |
| | 8030101 | 52 | 300 | 15000 | 13200 | 45000 | 39600 |
| | 8030102 | 54 | 4500 | 26800 | 11400 | 1206000 | 513000 |
| | 8030103 | 83 | 200 | 81000 | 29700 | 162000 | 59400 |
| | | | 5000 | | | 1413000 | 612000 |
| | 8030200 | | | | | | |
| | 8030201 | 52 | 1070 | 19480 | 13200 | 208436 | 141240 |
| | 8030202 | 54 | 430 | 26800 | 13200 | 115240 | 56760 |
| | | | 1500 | | | 323676 | 198000 |
| | 8030300 | | | | | | |
| F | 8030301 | 52 | 3100 | 15000 | 13200 | 465000 | 409200 |
| F | 8030302 | 54 | 5550 | 26400 | 11941 | 1465200 | 662726 |
| | | | 8650 | | | 1930200 | 1071926 |
| | 8040000 | | | | | | |
| | 8040001 | 51 | 6000 | 7625 | 11800 | 457500 | 708000 |
| | 8040002 | 56 | 5270 | 55078 | 11000 | 2902611 | 579700 |
| | 8040003 | 83 | 1200 | 69267 | 21233 | 831204 | 254796 |
| | | | 12470 | | | 4191315 | 1542496 |
| | 8050000 | | | | | | |
| | 8050100 | 54 | 67617 | 38526 | 9561 | 26050125 | 6464861 |
| | | | 67617 | | | 26050125 | 6464861 |
| MS | 8050200 | 54 | 41048 | 37388 | 10286 | 15347026 | 4222197 |
| | | | 41048 | | | 15347026 | 4222197 |
| CS | 8050300 | 54 | 29300 | 36629 | 10100 | 10732297 | 2959300 |
| | | | 29300 | | | 10732297 | 2959300 |
| ICS | 8050400 | 54 | 31800 | 38915 | 10122 | 12374970 | 3218796 |
| | | | 31800 | | | 12374970 | 3218796 |

A. V. ROE CANADA LTD.
MALTON, ONT.

WEIGHTS C. OF G. TABULATION
(AIRFRAME)

PROJECT C-105 PREPARED BY _____ A.U.W. _____ LBS. COMPONENT _____

| DESCRIPTION | REFERENCE NO. | COMP. NO. | WEIGHT | H. |
|--------------------------------|---------------|-----------|--------|------|
| OPERATIONAL LOAD | 9000000 | | | |
| 99 CREW MEMBERS | 9010000 | 52 | 43000 | 19 |
| | | | 43000 | |
| ENGINE OIL | 9020000 | | | |
| 120 ENGINE OIL USABLE | 9020001 | | 54146 | 1 |
| 75 ENGINE OIL TRAPPED | 9020002 | | 30946 | 1 |
| | | | 8508 | |
| 129 MISSILES GAR IA | 9030000 | 54 | 104240 | 39 |
| | | | 104240 | |
| OXYGEN CHARGE | 9040000 | | | |
| 128 OXYGEN CHARGE F F | 9040001 | 52 | | 7220 |
| 128 OXYGEN CHARGE C F | 9040002 | 54 | 12672 | 6 |
| | | | 1339 | |
| 125 ALCOHOL FOR RADOME DEICING | 9050000 | 51 | 2200 | 9 |
| | | | 2200 | |
| RESIDUAL FUEL | 9070000 | | | |
| 74 RESIDUAL FUEL C F | 9070001 | 54 | 4710 | 39 |
| 74 RESIDUAL FUEL I W | 9070002 | 62 | 17270 | 57 |
| | | | 21960 | |

UNCLASSIFIED
NON CLASSIFIED

WEIGHTS C. OF G. TABULATION

(AIRFRAME)

REPORT NO. 7-0400-05 Issue 18

Sheet # 004-13

DATE Sept. 1/55 PAGE

A.U.W. LBS. COMPONENT

D
IE

WEICING

| REFERENCE NO. | COMP. NO. | WEIGHT | H. ARM | V. ARM | H. MOMENT | V. MOMENT |
|---------------|-----------|--------|--------|---------|-----------|-----------|
| 9000000 | | | | | | |
| 9010000 | 52 | 43000 | 19400 | 13650 | 8342000 | 5869500 |
| | | 43000 | | | 8342000 | 5869500 |
| 9020000 | | | | | | |
| 9020001 | | 54146 | 11711 | 13500 | 3311798 | 730890 |
| 9020002 | | 30946 | 11711 | 13500 | 1892631 | 417690 |
| | | 8508 | | | 5204429 | 1148580 |
| 9030000 | 54 | 104240 | 39912 | 9560 | 41604269 | 9965344 |
| | | 104240 | | | 41604269 | 9965344 |
| 9040000 | | | | | | |
| 9040001 | 52 | | 72204 | 9313200 | 14755 | 9504 |
| 9040002 | 54 | 12672 | 6280 | 16150 | 332968 | 204621 |
| | | 1339 | | | 347723 | 214125 |
| 9050000 | 51 | 2200 | 9300 | 13800 | 204600 | 303600 |
| | | 2200 | | | 204600 | 303600 |
| 9070000 | | | | | | |
| 9070001 | 54 | 4710 | 39416 | 12250 | 1856494 | 576975 |
| 9070002 | 62 | 17270 | 57558 | 13850 | 9940267 | 2391895 |
| | | 21980 | | | 11796761 | 2968870 |

DUPLICATE
3558
MADE IN U.S.A.